

CALLISTO



krug



An extensive collection of newly-designed seating for task, managerial and meeting room applications, Callisto has above all else been engineered to provide a comfortable and supportive seating experience. The back and seat forms were created using anthropomorphic research and leading-edge modeling software, giving Callisto shape and contours that lessen muscle fatigue during extended periods of sitting. And Callisto's proprietary synchro-tilt mechanism automatically adjusts tilt tension with the user's individual body weight, simultaneously providing optimal movement and support through a full range of positions (and with a standard seat slider).



The Adjustable Arm features a range of lateral and height adjustability, while the Fixed Cantilever Arm provides a supportive but stationary option.







Callisto's offering includes breathable mesh on both seats and backs, as well as upholstered seats and backs - and any combination of mesh and upholstery.

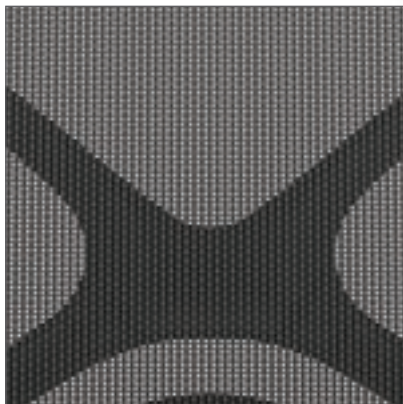




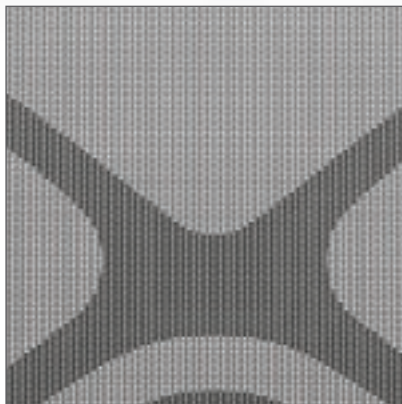
Callisto's sleek good looks are enhanced with finish and textile options: two standard mesh colors, an infinite selection of textiles, and two finishes - Polished Aluminum and Black.



MESH COLOR OPTIONS



BLACK



GREY

FEATURES



BREATHABLE MESH

Mesh Seats and Backs are available in 2 colors: Black and Grey.



UPHOLSTERED CUSHIONING

Upholstered Seats and Backs are available in a wide range of textiles, and features molded foam that is supportive for extended periods of sitting.



ADJUSTABLE LUMBAR SUPPORT

This optional feature provides enhanced support in the lower lumbar area of the back.



SELF-ADJUSTING SYNCHRO MECHANISM

The tilt feature adjusts automatically to the user's weight. It includes a standard seat slider feature, and 4 position tilt lock with anti-kickback, and height adjustability.



FIXED CANTILEVER ARM

This arm features Polished Aluminum with an integrated urethane pad surface.



ADJUSTABLE ARM

Height adjustment of 2.5". Arm pad forward/backward adjustment of 1.5". Arm pad has a 3 position swivel of 15 degrees left and 15 degrees right.



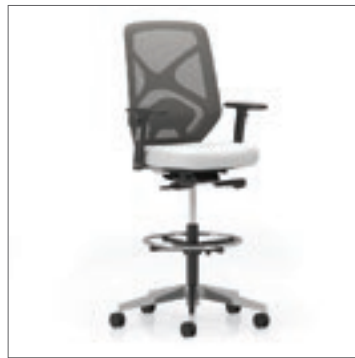
ARMLESS

All Callisto models are available armless.



BASES

Base options include Polished Aluminum and Black Polymer, and a soft wheel caster option.



STOOL BASE

A stool version is available on all Callisto models. It has a standard height adjustment range of 7.5". Foot ring is Polished Chrome, and standard gas lift is Black.



All products are air emissions certified

krug

solutions@krug.ca | www.krug.ca | 1.888.578.KRUG